

ADDON[®]

GWAR3500 Wireless ADSL 2/2+ Modem Router (4-port)



- * Please remove any ADSL USB Modem Driver or dial-up software and disable the firewall. As they may cause connection problem.
- * This quick installation is meant to help you to install the product quickly and easily. For further information, please refer to the User Manual

ADD-GWAR3500 Quick Installation Guide

Package Contents

- | | | |
|-----------------------------|--------------------------------|------------------------------|
| - 1 x Wireless Modem Router | - 1 x GWAR3500 CD-ROM | - 1 x Ethernet (RJ45) Cable |
| - 1 x 12v/1000mA AC Power | - 1 x Quick Installation Guide | - 1 x Telephone (RJ11) Cable |

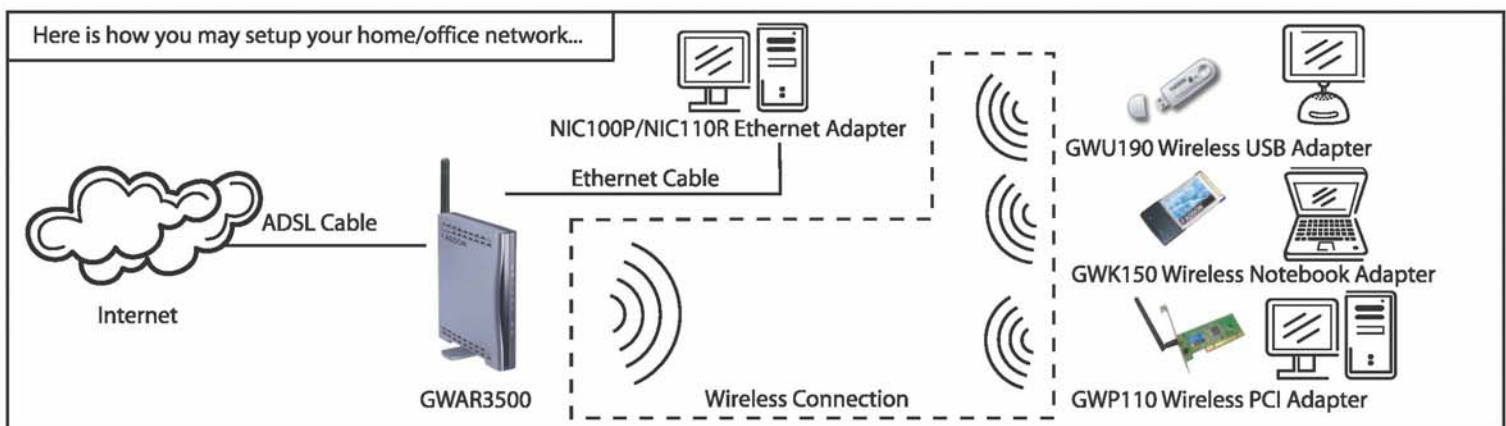


- PWR:** The LED stays lighted to indicate the system is power on properly.
- WLAN:** This LED is lighted when the Wireless connection is established and flashes when the data is sending/ receiving via wireless.
- ADSL:** This LED will be on all the time when there is a ADSL signal on the ADSL line. Please chekc you physical connection when ADSL LED none-stop flashing.
- LAN:** The LED is lighteed when a connection is established to LAN (1-4) port and flashes when LAN port is sending/receiving data.

Before You Start

Proper placement of your Gateway is important to improve your network performance. The figure below is a rough overview of the connection. Especially, in order to ensure the best performance of your wireless network, keep the following tips in mind to choose the location of your ADDON Gateway:

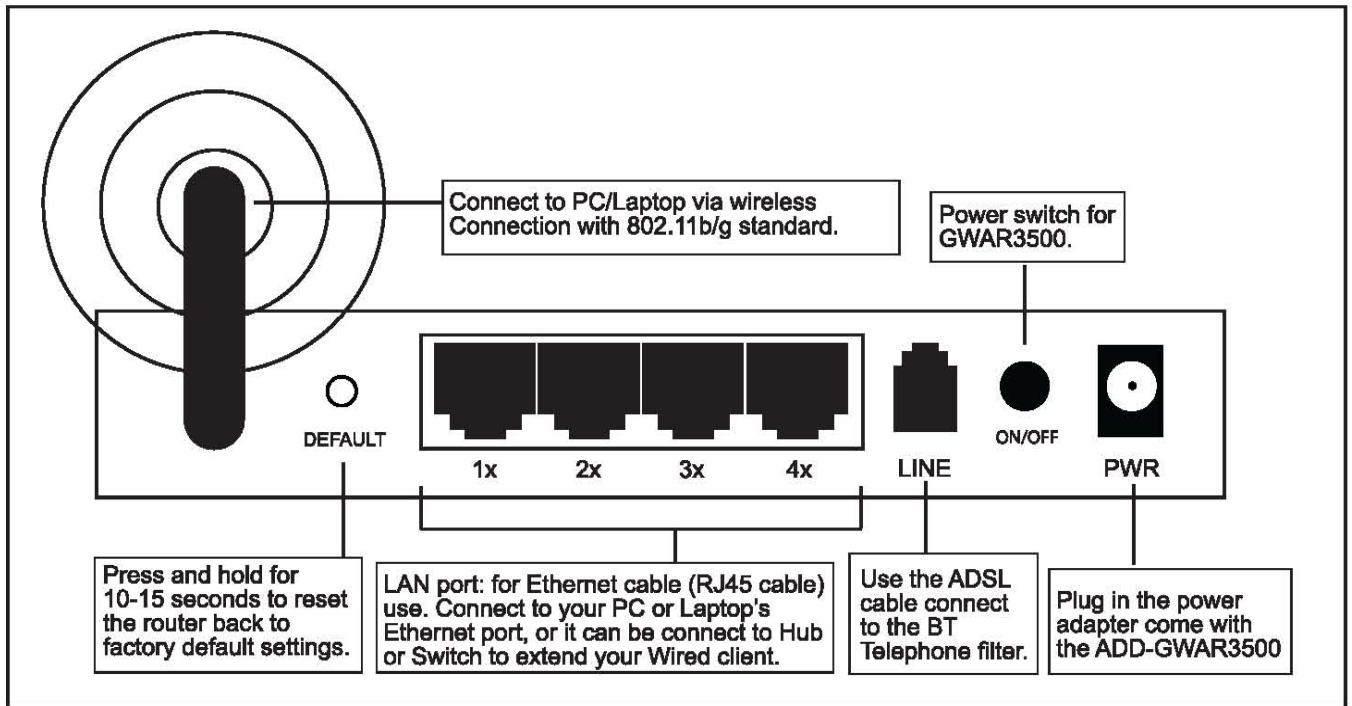
- Place the Gateway on a flat, stable surface.
- Keep the device clear from metal obstructions and away from direct sunlight.
- Keep the Gateway away from transformers, heavy-duty motors, fluorescent light, microwave ovens, refrigerators and other industrial equipments to prevent signal loss.
- Do NOT place objects or components on top of the Gateway.
- Locate the Gateway in a central area as possible to provide better coverage for all wireless clients.
- Connect the Power adapter to the receptor at the back panel of the ADD-GWAR3500 and plug the other end of the power adapter to the wall outlet or power strip. The PWR LED will turn ON to indicate proper operation.
- Insert an Ethernet cable to LAN port 1 on the back panel of the ADD-GWAR3500 and an available Ethernet port on the network adapter in the computer you will use to configure the ADD-GWAR3500. The LED light for LAN Port 1 will illuminate to indicate proper connection.
- Metallic-based UV window tint can affect wireless performance. Do NOT place the Gateway next to a tinted window.
- Make sure the antenna is pointing up at all the times.



Warning: Only use the power adapter is provided from this package, use other power adapter may cause hardware damage

For any further information on ADDON product, please visit our website on : <http://www.addon-tech.com>

Rear View and Hardware Connection...



Physical Connection

1. Connect the ADSL cable from BT filter to the ADSL port at the back of the router.
2. Connect the Ethernet cable from the Ethernet port on the router to the Ethernet port on the PC.
3. Connect the power cable to the router and turn on the power for the router.

PC configuration

Windows XP

1. Click "start" -> "control panel" -> "network and internet connections" -> "network connections";
2. Right click on the "local area connection" which under the "lan or high speed internet", choose "properties";
3. fig.1 will appear, choose "internet protocol (TCP/IP)", and click "properties";
4. fig.2 will appear, choose "Obtain IP address automatically" and "Obtain DNS server address automatically", click "OK" to save the settings.

Internet Explorer configuration

Windows XP

1. Click "start" -> "control panel" -> "internet options", fig.3 will appear;
2. Choose "connections", tick "never dial a connection", and click "OK" to save the settings.

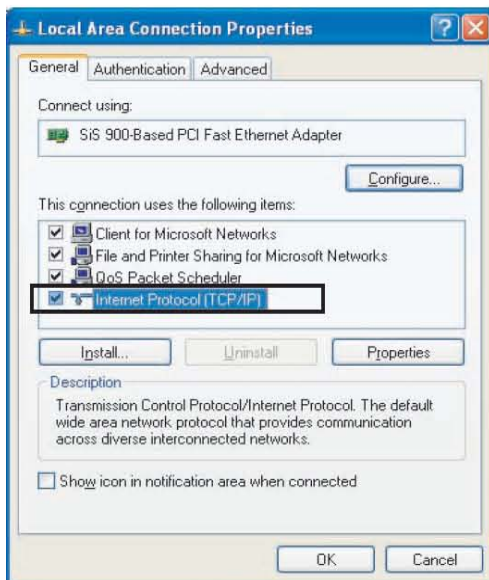


fig.1

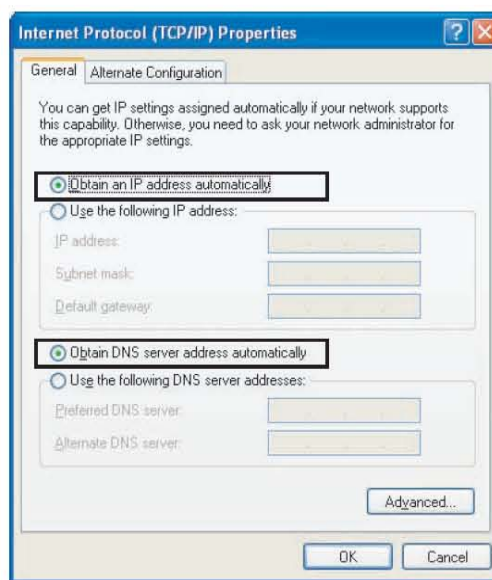


fig.2

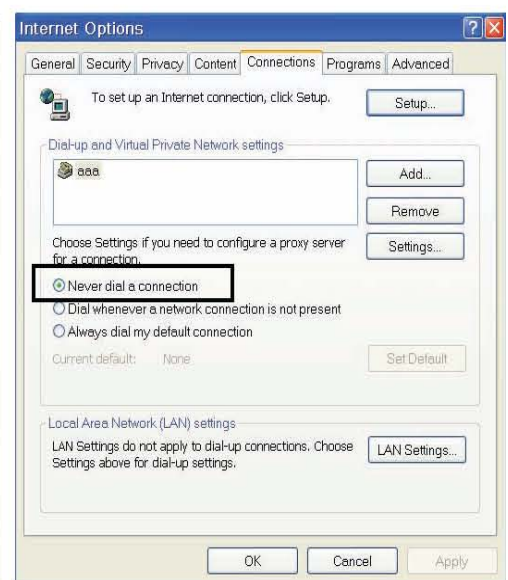


fig.3

Start your Web Browser

To use the Web-based Utility, you have to launch your Internet Browser (MS IE 5.0 or later, Netscape Navigator 4.7 or later).
 Step1: Enter ADD-GWAR3500 default IP address <http://192.168.1.1> in the Address field and press Enter (fig.4).



fig.4

Step2: Login dialog box will appear, enter "admin" as the username and "admin" as the default password, then click "OK" to login to the web management utility (fig.5)



fig.5

Step3: (fig.6) this first screen that appears is Home screen. The basic layout of the Home page consists of a page selection list across the top of the browser window. The footer displays gateway status, connection information and other useful information.

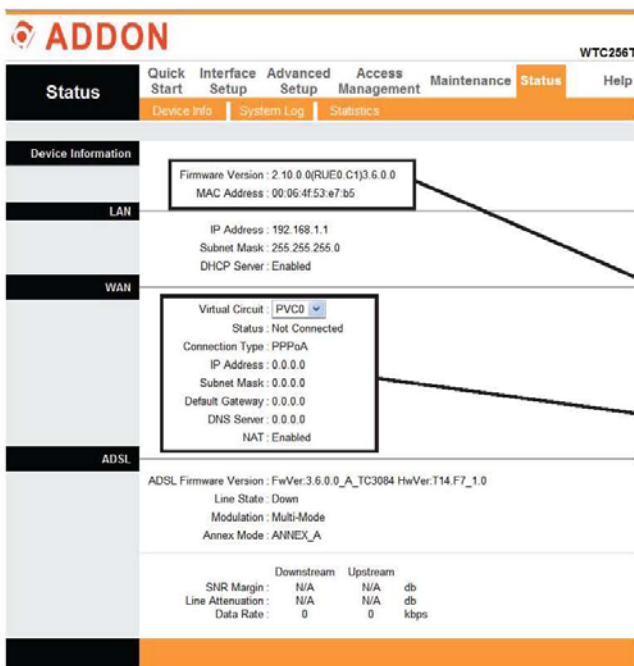


fig.6

Firmware version: you might need to use it when you contact us for further information about the ADD-GWAR3500 by email or via telephone.

Internet connection information: when you have the proper ADSL connection, you can find an IP address and subnet mask and default gateway on this section.

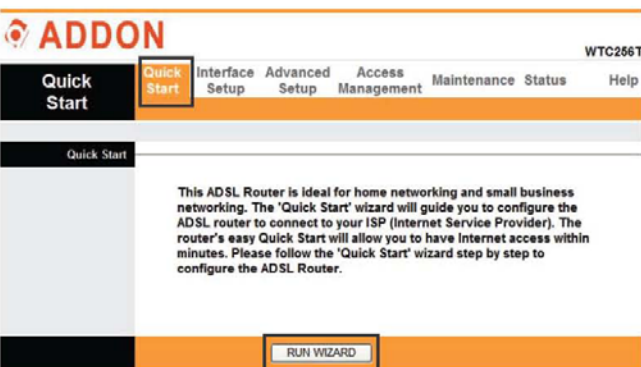


fig.7

You may use one of the following method to setup your ADD-GWAR3500 Gateway: "Run Wizard" or "Interface setup"

Setup the ADD-GWAR3500 by "Run Wizard".

a) fig.7 Click "Quick Start" and then click "RUN WIZARD".



fig.8

b) fig.8 Read the information carefully, and click "NEXT" to continues.

ADDON

Quick Start - Password

You may change the **admin** account password by entering in a new password. Click **NEXT** to continue.

New Password:

Confirmed Password:

fig.9

c) fig.9 Change the password to your own for increased security. Please enter and confirm the new password for login to "192.168.1.1".

d) fig.10 Choose the correct time zone and click "NEXT" to continue.

ADDON

Quick Start - Time Zone

Select the appropriate time zone for your location and click **NEXT** to continue.

(GMT) Greenwich Mean Time : Dublin, Edinburgh, Lisbon, London

fig.10

ADDON

Quick Start - ISP Connection Type

Select the Internet connection type to connect to your ISP. Click **NEXT** to continue.

- Dynamic IP Address Choose this option to obtain a IP address automatically from your ISP.
- Static IP Address Choose this option to set static IP information provided to you by your ISP.
- PPPoE/PPPoA Choose this option if your ISP uses PPPoE/PPPoA. (For most DSL users)
- Bridge Mode Choose this option if your ISP uses Bridge Mode.

fig.11

e) fig.11 Choose "PPPoE/PPPoA" for your ISP Connection Type and click "NEXT" to continue.

f) fig.12 Now fill in the username and password you were supplied by your Internet Service Provider (ISP) into the username and password fields. It is important that the correct username and password are entered otherwise the connection will fail. Your ISP will be able to confirm your username and password.

ADDON

Quick Start - PPPoE/PPPoA

Enter the PPPoE/PPPoA information provided to you by your ISP. Click **NEXT** to continue.

Use name:

Password:

VPI: (0-255)

VCI: (1-65535)

Connection Type:

fig.12

ADDON

Quick Start Complete II

The Setup Wizard has completed. Click on **BACK** to modify changes or mistakes. Click **NEXT** to save the current settings.

fig.13

f) fig.13 Click "NEXT" to save your settings and complete the Quick Start.

Setup the ADD-GWAR3500 by "Interface Setup".

- Open Internet Explorer to login to 192.168.1.1; (as show in fig.14)
- Click "Interface Setup" and choose "Internet";
- Enter the "username" and "password" you were supplied by your ISP;
- Click "SAVE" to save the change you made to the router.

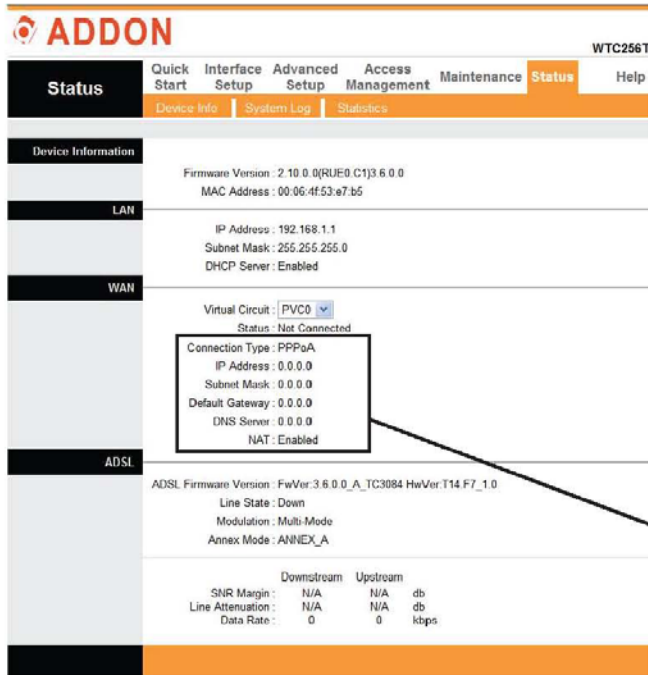


fig.15

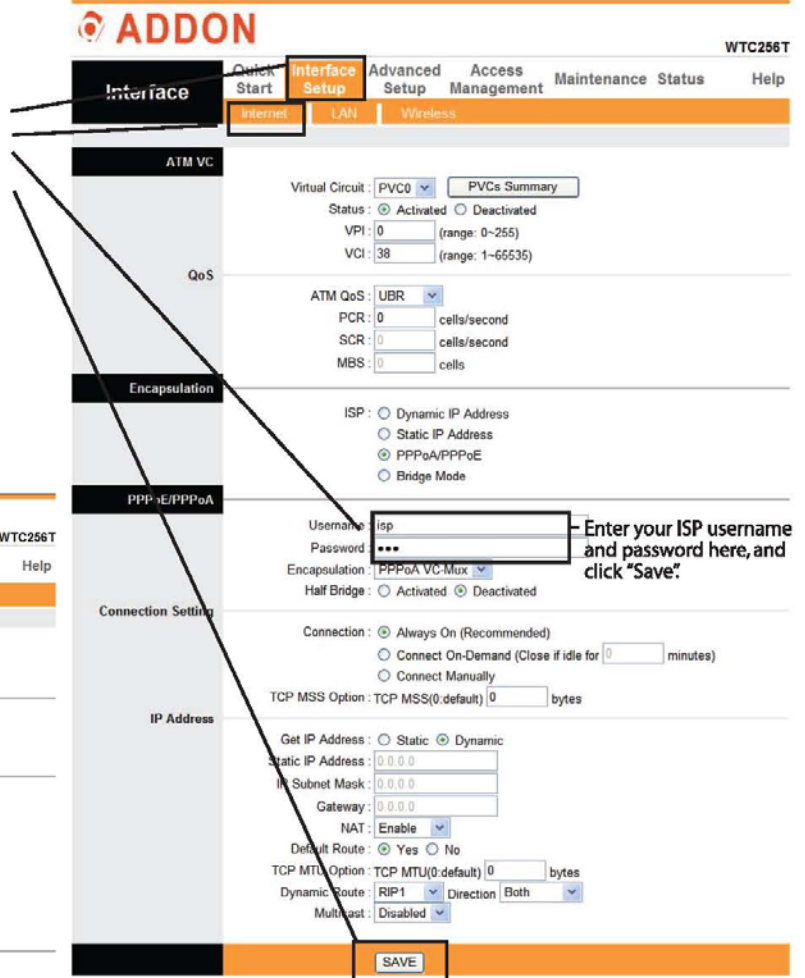


fig.14

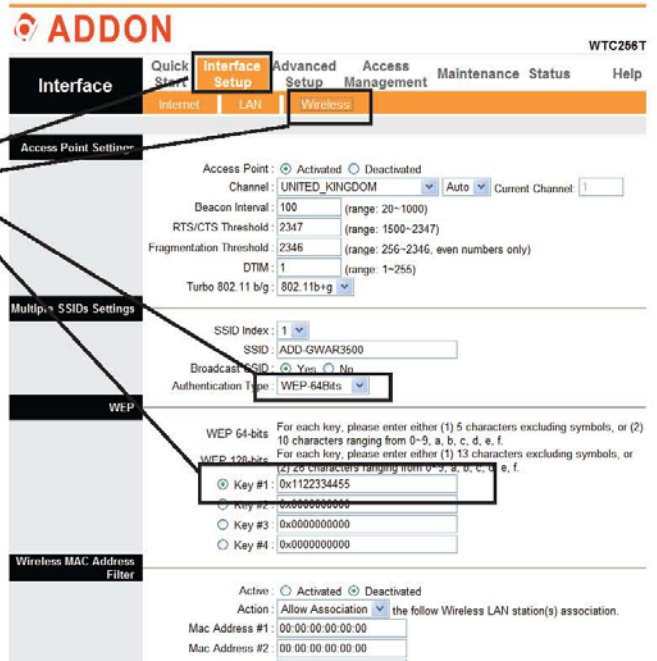
fig.15 Click on "Status", check IP address and default gateway, if "0.0.0.0", please contact your ISP for the correct username and password; if there is an IP address, then you should be able to go to internet without any problem.

Setup the Wireless Security and Wireless Connection

Setup the WEP security key:

- Go to 192.168.1.1;
- Click "Interface Setup" and then choose "Wireless";
- Change Authentication Type to "WEP64Bits";
- Fill in the key in key#1 (64bit key format: 10 digits, mix with numbers from 0-9 and letters from a-f)
- Click on "SAVE" at the bottom to save the change.

Now you can connect to the Router via a wireless-LAN-enabled computer/laptop with the following settings:
 SSID: ADD-GWAR3500;
 WEP key: 10 digits you just created (for WEP-64bits).



Connect you wireless PC/Laptop to ADD-GWAR3500

- For Windows xp:

- Go to "Start" > "Control Panel" > "Network and Internet Connections" > "Network Connection";
- Right click on the "Wireless Network Connection", and choose "View Available Wireless Networks". fig.16
- fig.17 Choose the "ADD-GWAR3500", double-click and the password box will appear, Enter and confirm the password then the connection will establish.



fig.17



fig.16

- For Windows Vista:

- Right click on "Connection" (down right hand corner);
- (fig.18) Select "Connect to a network", all available networks will be displayed on the list.
- Highlight "ADD-GWAR3500" and click on "Connect" (fig.19);
 - If you already setup the Security Key for GWAR3500, the following window (fig.20) will be displayed.

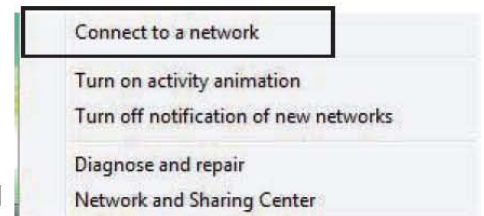


fig.18

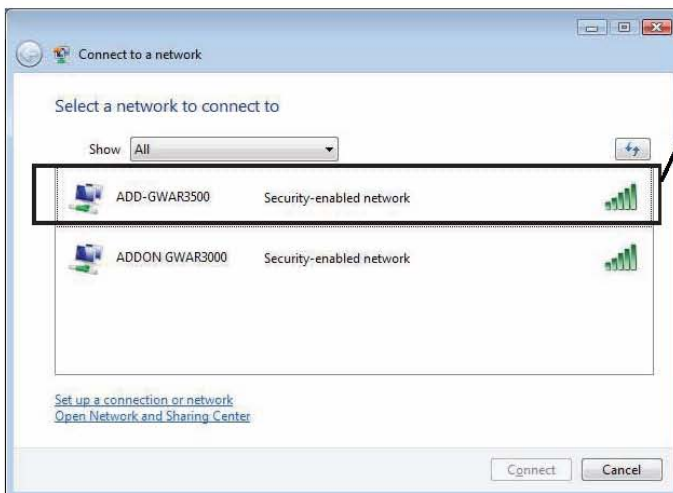


fig.19



fig.20

- Enter your key and press "Connect";

Check your Wireless Network Connection Status (Windows Vista)

- e) Once the connection established, you can see the general status in "Network and Sharing Center" (fig.21);
- f) Choose "Manage network connections", fig.22 will appear;
- g) Choose "Wireless Network Connection", fig.23 will appear, you can find more information about your connection in this window.

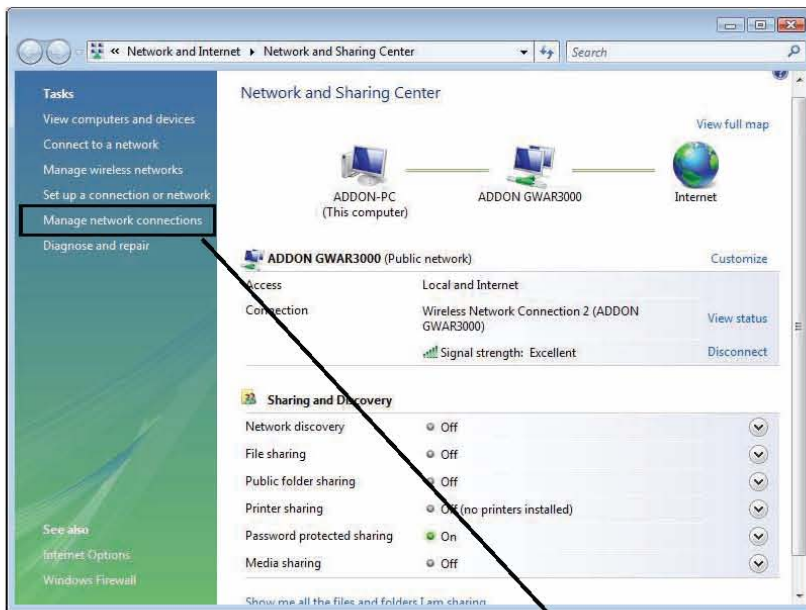


fig.21



fig.22

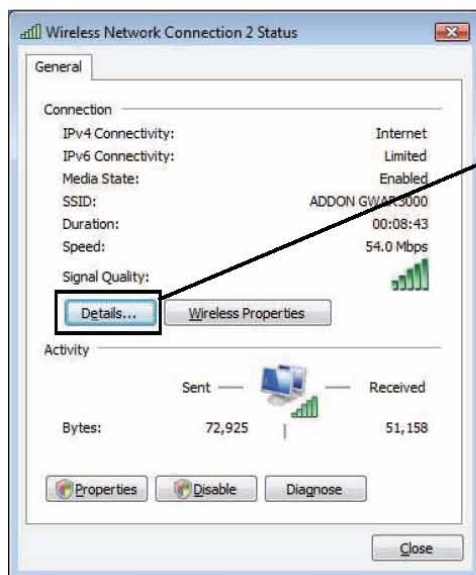
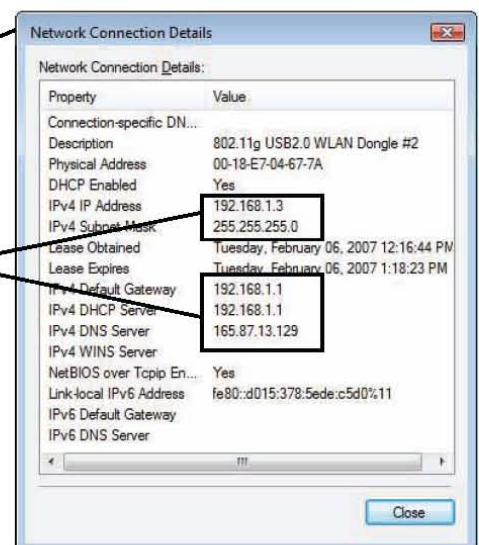


fig.23

You will find an IP address and default gateway number is your connection is correct.



Congratulations! You have finished installing your new ADDON Wireless ADSL2/2+ Modem Router. For any further information about ADDON GWAR3500, please refer to your user's manual or visit our website on <http://www.addon-tech.com>.

