

# ADDON<sup>®</sup>

## NWAR3670

Wireless ADSL 2/2+  
Modem Router (4-port)



- \* Please remove any ADSL USB Modem Driver or dial-up software and disable the firewall. As they may cause connection problem.
- \* This quick installation is meant to help you to install the product quickly and easily. For further information, please refer to the User Manual

## ADD-NWAR3670 Quick Installation Guide

### Package Contents

- |                             |                                |                              |
|-----------------------------|--------------------------------|------------------------------|
| - 1 x Wireless Modem Router | - 1 x CD-ROM                   | - 1 x Ethernet (RJ45) Cable  |
| - 1 x Power Supply          | - 1 x Quick Installation Guide | - 1 x Telephone (RJ11) Cable |

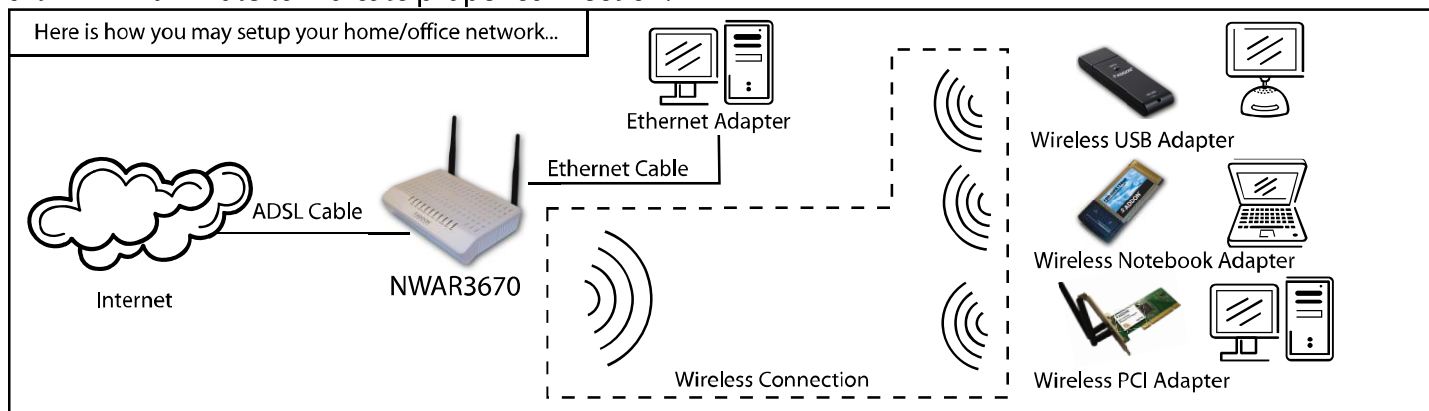


LED	Color	Status	Description
ADSL	Green	On	The ADSL Line is established.
		Slow Blinks	No DSLAM's signal is being detected.
		Fast Blinks	The ADSL Line is training.
		Off	The device is powered off.
Internet	Green	On	PPP dial-up is successful or the IP address has been assigned by DHCP.
		Slow Blinks	The PPP or DHCP negotiation is in progress.
		Fast Blinks	Data is being transmitted or received on the Internet.
	Red	On	The authentication is failed.
LAN 4/3/2/1	Green	Off	The LAN connection is not established.
		Blinks	Data is being transmitted or received through the LAN interface.
		On	The LAN connection is normal.
WLAN	Green	On	The WLAN connection is established.
		Blinks	Data is being transmitted or received through the WiFi interface.
		Off	The WLAN connection is not established.
WPS	Green	On	After the registration is successful, the WPS indicator is on for 5 minutes.
		Blinks	<ul style="list-style-type: none"> <li>● If the WPS indicator is on for 0.2 second and then off for 0.1 second, the WPS button is pressed and a network card is registering.</li> <li>● If the WPS indicator blinks once every 0.1 second, the registration fails.</li> </ul> <p>If the WPS indicator keeps blinking for five times, once every 0.1 second, and then is off for 0.5 second, two or more wireless network cards are registering at the same time.</p>
		Off	WPS negotiation is not enabled on the device.
Power	Green	Off	The device is powered off.
		On	The power is on and the initialization is normal.
USB	Green	Off	No USB signal is detected.
		Blinks	The user data is passing through USB port.
		On	The USB interface is ready to work.

## Before You Start

Proper placement of your Gateway is important to improve your network performance. The figure below is a rough overview of the connection. Especially, in order to ensure the best performance of your wireless network, keep the following tips in mind to choose the location of your ADDON Gateway:

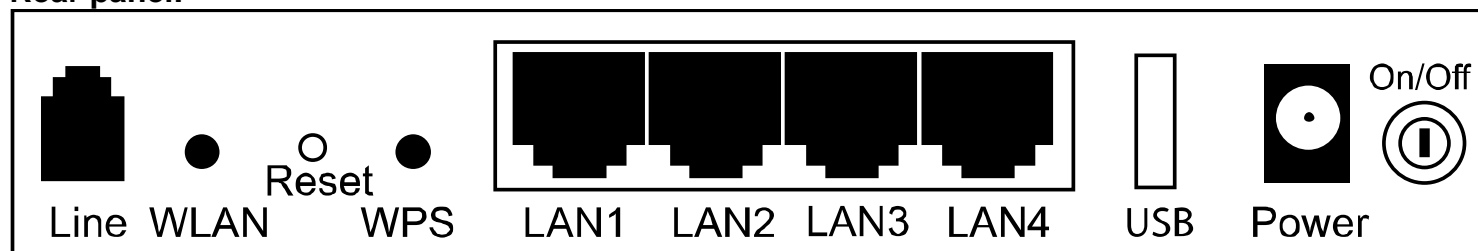
- Place the Gateway on a flat, stable surface.
- Keep the device clear from metal obstructions and away from direct sunlight.
- Keep the Gateway away from transformers, heavy-duty motors, fluorescent light, microwave ovens, refrigerators and other industrial equipments to prevent signal loss.
- Do NOT place objects or components on top of the Gateway.
- Locate the Gateway in a central area as possible to provide better coverage for all wireless clients.
- Connect the Power adapter to the receptor at the back panel of the ADD-NWAR3670 and plug the other end of the power adapter to the wall outlet or power strip. The PWR LED will turn ON to indicate proper operation.
- Insert an Ethernet cable to LAN port 1 on the back panel of the ADD-NWAR3670 and an available Ethernet port on the network adapter in the computer you will use to configure the ADD-NWAR3670. The LED light for LAN Port 1 will illuminate to indicate proper connection.



**Warning:** Only use the power adapter is provided from this package, use other power adapter may cause hardware damage

## 1. Hardware Connection

### Rear panel:



Interface	Description
Line	RJ-11 port: Connect the Modem to ADSL connector or splitter by telephone line.
WLAN	Enable or disable the WLAN. Press the button to enable WLAN.
Reset	To restore the factory default, keep the device powered on and push a long needle into the hole. Press down the button and then release.
WPS	Enable or disable the WPS. Press the button to enable WPS.
LAN1/2/3/4	RJ-45 port: Connect the Modem to a PC or other network device by network cable.
USB	USB host port, connect to another USB device to supply some value-added application.
Power	Power supplied port, plug in for power adapter that the power input is 12V DC, 1 A.
	Power switch.

2 For any further information on ADDON product, please visit our website: <http://www.addon-tech.com>

## Physical Connection

1. Connect the ADSL cable from BT filter to the Line port at the back of the router.
2. Connect the Ethernet cable from the Ethernet port on the router to the Ethernet port on the PC.
3. Plug the power cable to the router and turn on the power for the router.

## PC Configuration

Windows 7

1. Click "start" -> "Control Panel"->"Network and Sharing Center"->Change adapter settings
2. Right click on "Local Area Connection", choose "Properties"
3. Select "Internet Protocol Version 4 (TCP/IPv4)", and click "Properties", as shown in fig.1
4. Select "Obtain an IP address automatically" and "Obtain DNS server address automatically", click "OK" to save the settings.

## Internet Explorer Configuration

Windows 7

1. Click "start"->"control panel"->"Internet Options", as shown in fig 3.
2. Click tab "Connections", select "Never dial a connection"

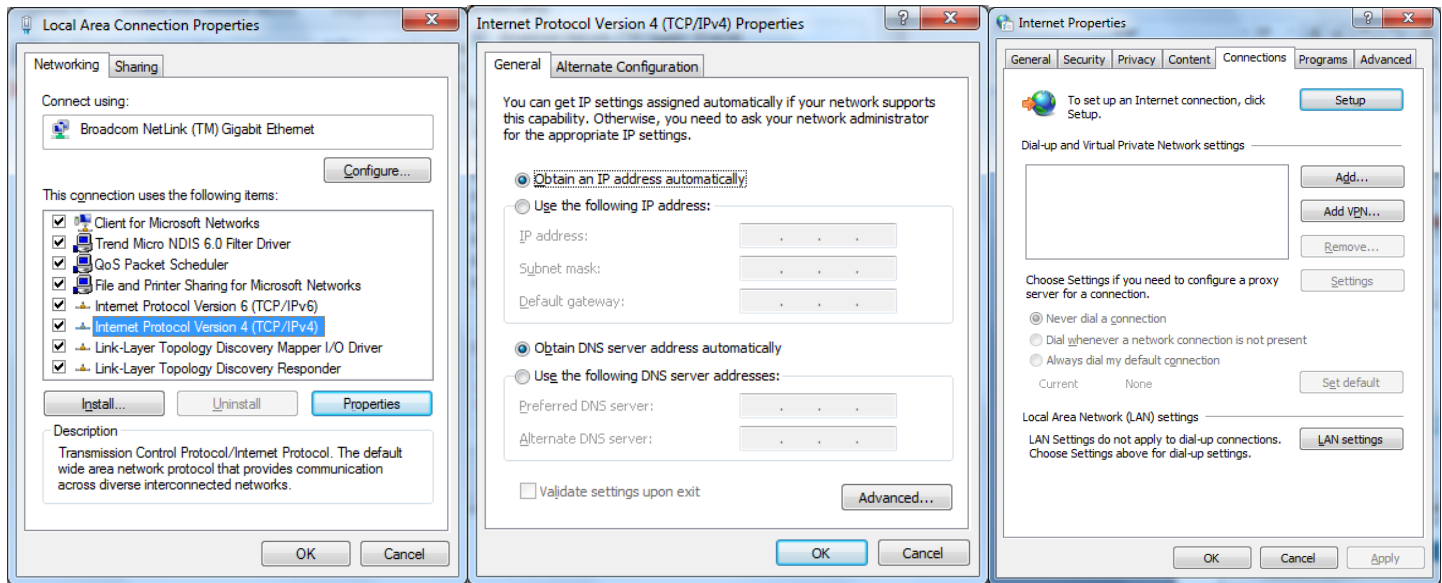


Fig.1

Fig.2

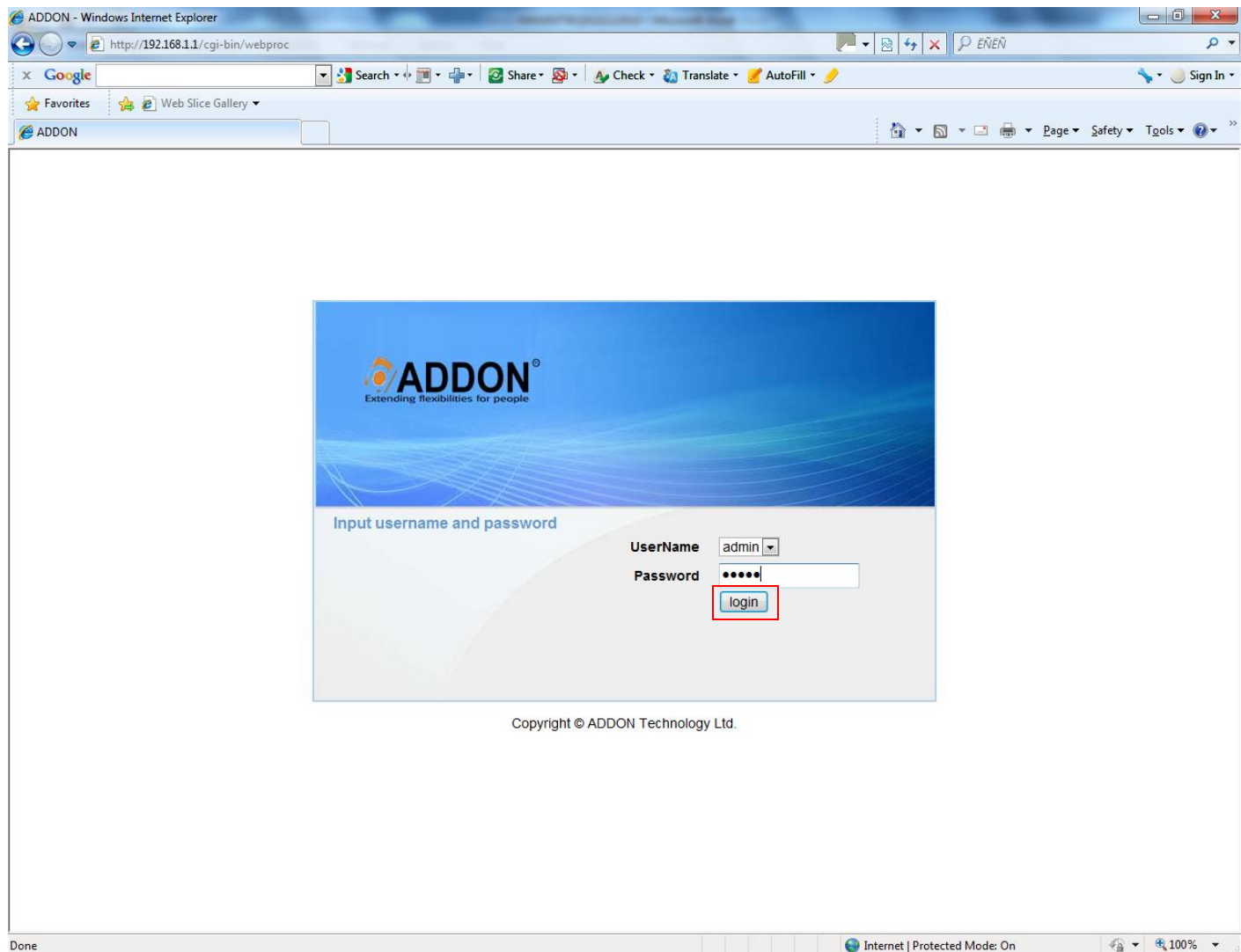
Fig.3

## 2. ADSL2+ Router Configuration

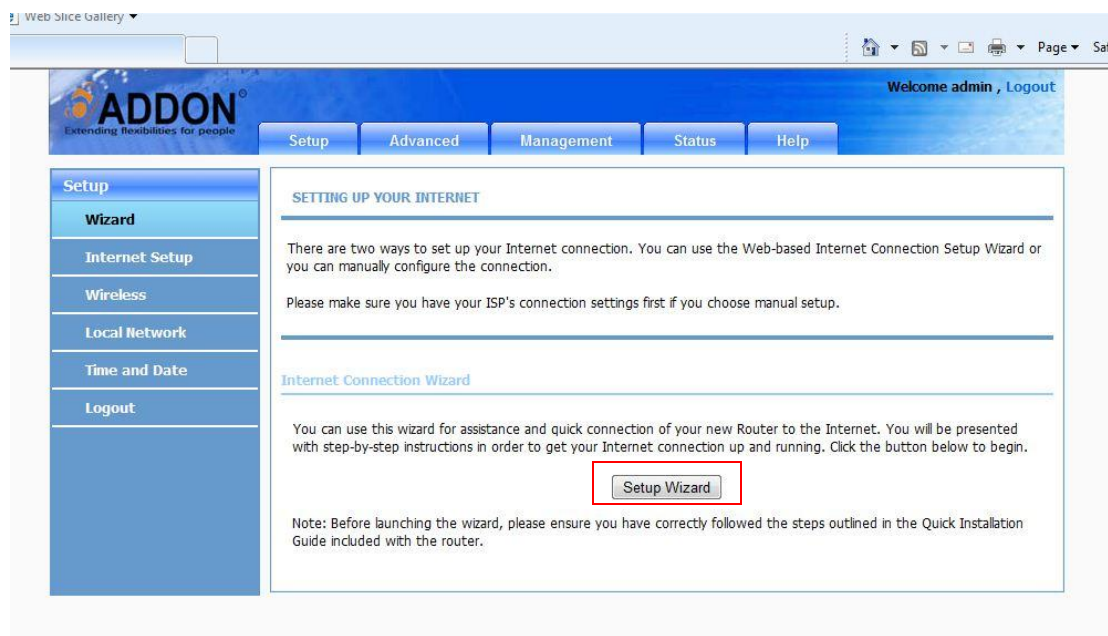
**Step 1:** Open Internet Explorer, enter NWAR3670 default IP address <http://192.168.1.1> in the address bar and press Enter.



**Step 2:** Enter “admin” as the password, if the login page is loaded. Click “login” to login to the web management site.



**Step 3:** The homepage of the router will be shown as below, and then click “Setup Wizard” to continue.



4 For any further information on ADDON product, please visit our website: <http://www.addon-tech.com>

**Step 4:** Click on “Next” to continue.

The screenshot shows the ADDON Setup Wizard's 'WELCOME TO SETUP WIZARD' screen. The left sidebar has a 'Setup' menu with options: Wizard, Internet Setup, Wireless, Local Network, Time and Date, and Logout. The main content area has a blue header with 'WELCOME TO SETUP WIZARD'. Below it, a paragraph states: 'This wizard will guide you through a step-by-step process to configure your new router and connect to the Internet.' A list of steps follows: Step 1: Set Time and Date, Step 2: Setup Internet Connection, Step 3: Configure Wireless Network, and Step 4: Completed and Quit. At the bottom, there are 'Next' and 'Cancel' buttons, with the 'Next' button highlighted by a red rectangle.

**Step 5:** Click on “Next” to continue.

The screenshot shows the ADDON Setup Wizard's 'STEP 1: SET TIME AND DATE' screen. The left sidebar is the same as the previous screen. The main content area has a blue header with 'STEP 1: SET TIME AND DATE'. Below it, a paragraph explains the Time Configuration options. A section titled 'TIME SETTING' contains a checked checkbox for 'Automatically synchronize with Internet time servers' and two text boxes for '1st NTP time server' (192.168.2.10) and '2th NTP time server' (192.168.2.100). A section titled 'TIME CONFIGURATION' contains a 'Time Zone' dropdown menu (set to '(GMT) Greenwich Mean Time: Dublin, Lisbon, London; Casablanca') and a checked checkbox for 'Enable Daylight Saving'. Below this are two rows of date pickers for 'Daylight Saving Start' and 'Daylight Saving End', both set to 2000 Year 04 Mon 01 Day 02 Hour 00 Min 00 Sec. At the bottom, there are 'Back', 'Next', and 'Cancel' buttons, with the 'Next' button highlighted by a red rectangle.



**Step 6:** Enter your ISP's username and password, and then click on "Next" to continue.

**ADDON**  
Extending flexibilities for people

Setup | Advanced | Management | Status | Help

**Setup**  
Wizard  
Internet Setup  
Wireless  
Local Network  
Time and Date  
Logout

**STEP 2: SETUP INTERNET CONNECTION**

Please select your ISP (Internet Service Provider) from the list below.

Protocol :

Encapsulation Mode:

VPI :  (0-255)

VCI :  (32-65535)

**PPPOE/PPPOA**

Please enter your Username and Password as provided by your ISP (Internet Service Provider). Please enter the information exactly as shown taking note of upper and lower cases. Click "Next" to continue.

Username :

Password :

Confirm Password :

**Step 7:** To setup your wireless security, select security level and enter your network key in the box. Then click on "Next" to continue.

In order to protect your network from hackers and unauthorized users, it is highly recommended you choose one of the following wireless network security settings.

**None** **Security Level** **Best**

☐ None ☐ WEP ☐ WPA-PSK ☒ WPA2-PSK

**Security Mode: WPA2-PSK**  
Select this option if your wireless adapters support WPA2-PSK.

Now, please enter your wireless security key :

**WPA2 Pre-Shared Key :**

(8-63 characters, such as a~z, A~Z, or 0~9, i.e. '%Fortress123&')

**Note:** You will need to enter the same key here into your wireless clients in order to enable proper wireless connection.

**Step 8:** Click on “Apply” to save the settings.

**Setup**  
Wizard  
Internet Setup  
Wireless  
Local Network  
Time and Date  
Logout

**STEP 4: COMPLETED AND RESTART**

Setup complete. Click "Back" to review or modify settings.

If your Internet connection does not work, you can try the Setup Wizard again with alternative settings or use Manual Setup instead if you have your Internet connection details as provided by your ISP.

**SETUP SUMMARY**

Below is a detailed summary of your settings. Please print this page out, or write the information on a piece of paper, so you can configure the correct settings on your wireless client adapters.

Time Settings :	1
NTP Server 1 :	192.168.2.10
NTP Server 2 :	192.168.2.100
Time Zone :	GMT
Daylight Saving Time :	0
VPI / VCI :	0/38
Protocol :	PPPoA
Connection Type :	VCMUX
Username :	asd
Password :	***
Wireless Network Name (SSID) :	ADD-NWAR3670
Visibility Status :	1
Encryption :	11i
Pre-Shared Key :	*****
WEP Key :	

Back Apply Cancel

**Step 9:** To check connection, click on “Status”, you will see status show “Connected” and WAN IP Address.

Setup Advanced Management **Status** Help

**Status**  
Device Info  
Wireless Clients  
DHCP Clients  
Logs  
Statistics  
Route Info  
Logout

**DEVICE INFO**

This information reflects the current status of your WAN connection.

**SYSTEM INFO(IN USB IN 3G)**

Modem Name :	IM-300NX
Time and Date :	2000-01-01 20:40:20
Firmware Version :	1.0.0

**INTERNET INFO**

Internet Connection Status : pppoa\_0\_38\_0\_0\_Internet

Internet Connection Status:	Connected
Default Gateway:	81.139.128.1
Preferred Dns Server:	62.6.40.178
Alternate Dns Server:	194.72.9.34
Downstream Line Rate (Kbps):	8127
Upstream Line Rate (Kbps):	444

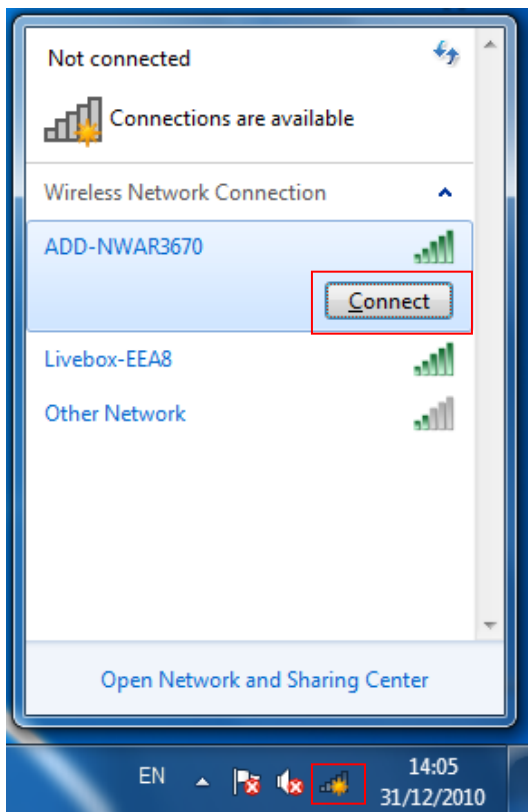
**Enabled WAN Connections :**

VPI/VCI	Service Name	Protocol	IGMP	QoS	IP Address
0/38	pppoa_0_38_0_0_Internet	PPPoA	Disable	Disable	81.149.153.253

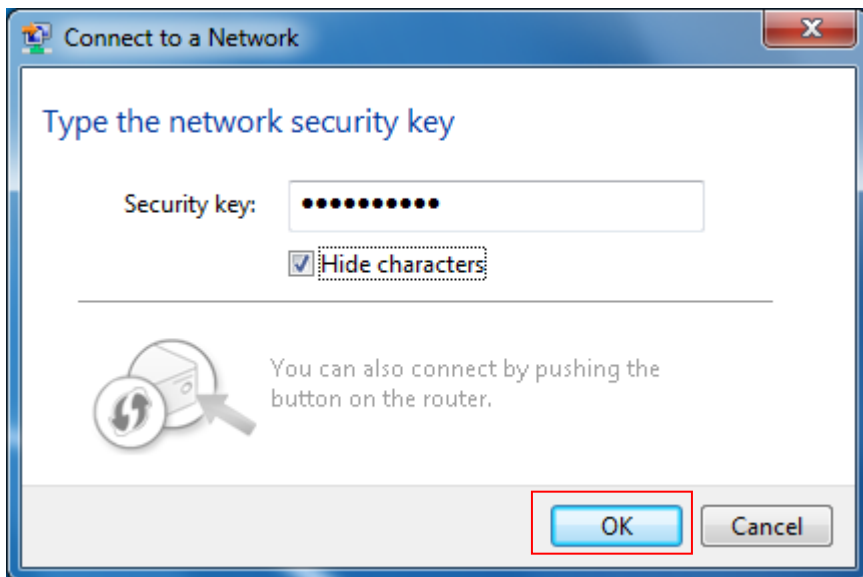
Note: For accessing USB storage using FTP over Internet, you must go to “Management” -> “Access Controls” -> “Services” to tick “WAN” for FTP and then click “Apply”.

### 3. Connect your wireless PC/laptop to NWAR3670

- For Windows 7
  1. Click on "connection" in the system tray, highlight your wireless network and click on "Connect".



2. Enter your network key when the box is shown below, and click on "OK".



**For any further information on ADDON NWAR3670, please refer to your user's manual in the CD.**

Note: To maximize your wireless connection speed in 11n mode, we recommend the customers to set WPA2-PSK with AES encryption for your wireless connection.