



HP5100

500Mbps Powerline AV Adapter Starter Kit



Important:

This Quick Installation Guide only gives you a brief idea to connect the devices. The details on using software are also available in the CD.

ADD-HP5100 Quick Installation Guide

Package Contents:

- Two 500Mbps Powerline AV Adapters
- One Software CD
- Two RJ45 Ethernet Cables
- One Quick Installation Guide



LED	Status	Description
Power	Green	It lights up when the Adapter is powered on
Ethernet	Green	It flashes to indicate activity over the Ethernet connection.
Data	Green	It flashes to indicate activity over the powerline connection.

1. Hardware Installation

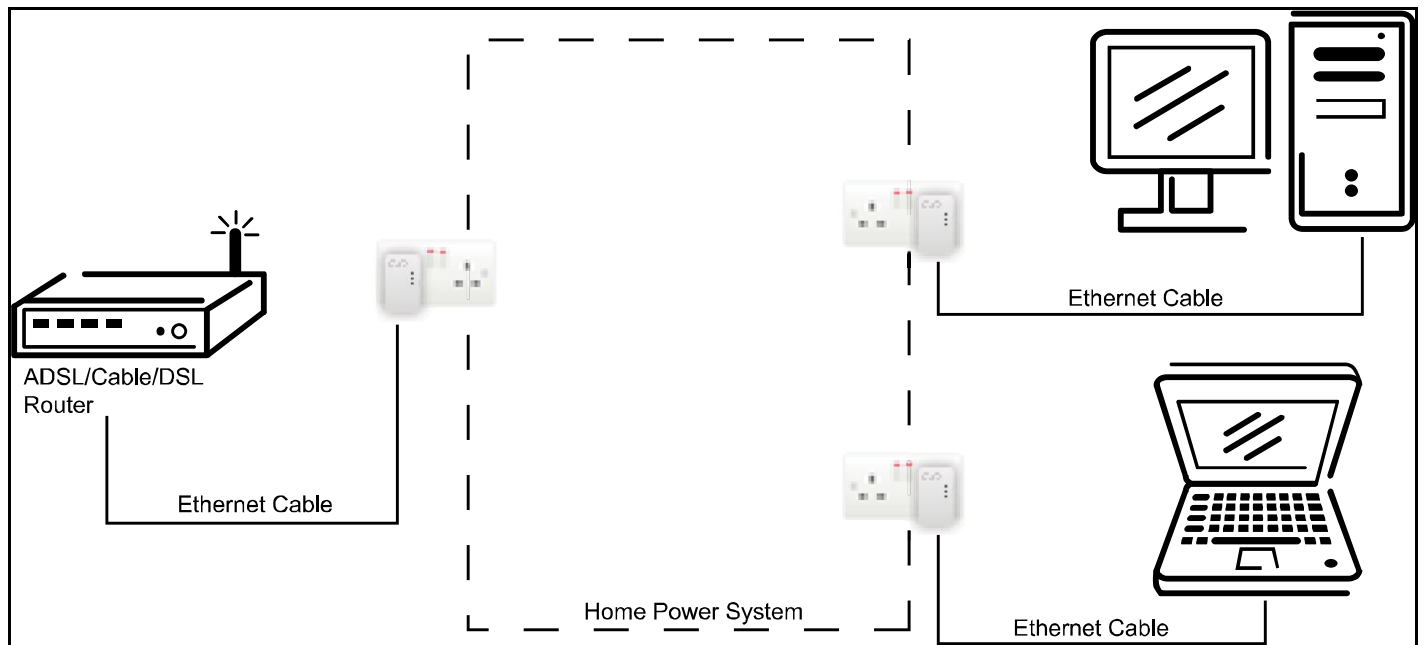


Figure 1 Hardware Connection

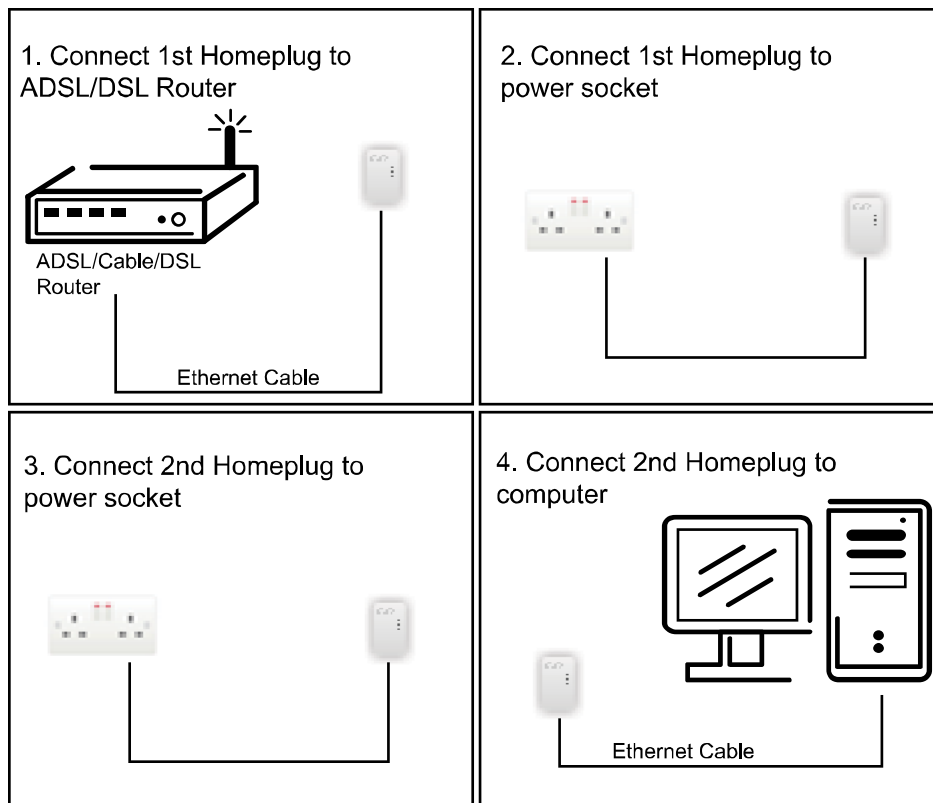


Figure 2 Installation Procedure

To establish the Home Network with ADDON HP5100, it needs a pair of HP5100 HomePlug Ethernet Adapters. One is connected to computer and the other one is connected to the router, as shown in Figure 1 and Figure 2.

How to connect to the hardware:

1. Connect HP5100 to your router

- Plug Ethernet cable into the Ethernet port of HP5100.
- Make sure your ADSL/Cable/DSL modem router is working correctly and plug the other end of the cable into the Ethernet port of your router.
- Plug HP5100 into your home power socket.

2. Connect HP5100 to Ethernet port in your computer

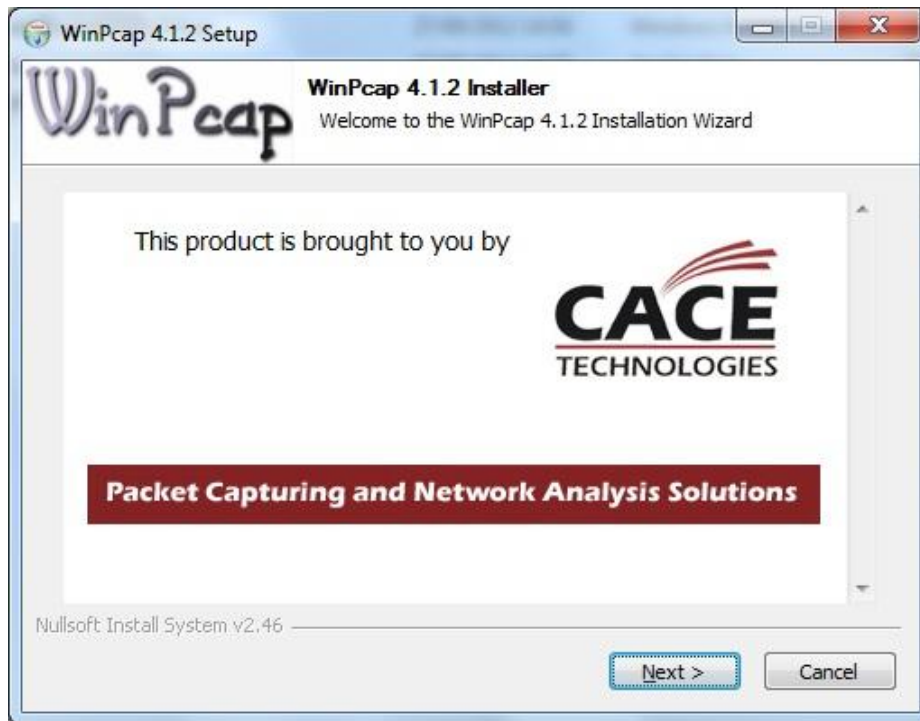
- Plug Ethernet cable into the Ethernet port of another HP5100.
- Plug the other end of the cable into the Ethernet port of your computer.
- Plug HP5100 into your home power socket.

2. Software Installation

Please note:

To install Utility, you must install WinPcap first in the CD.

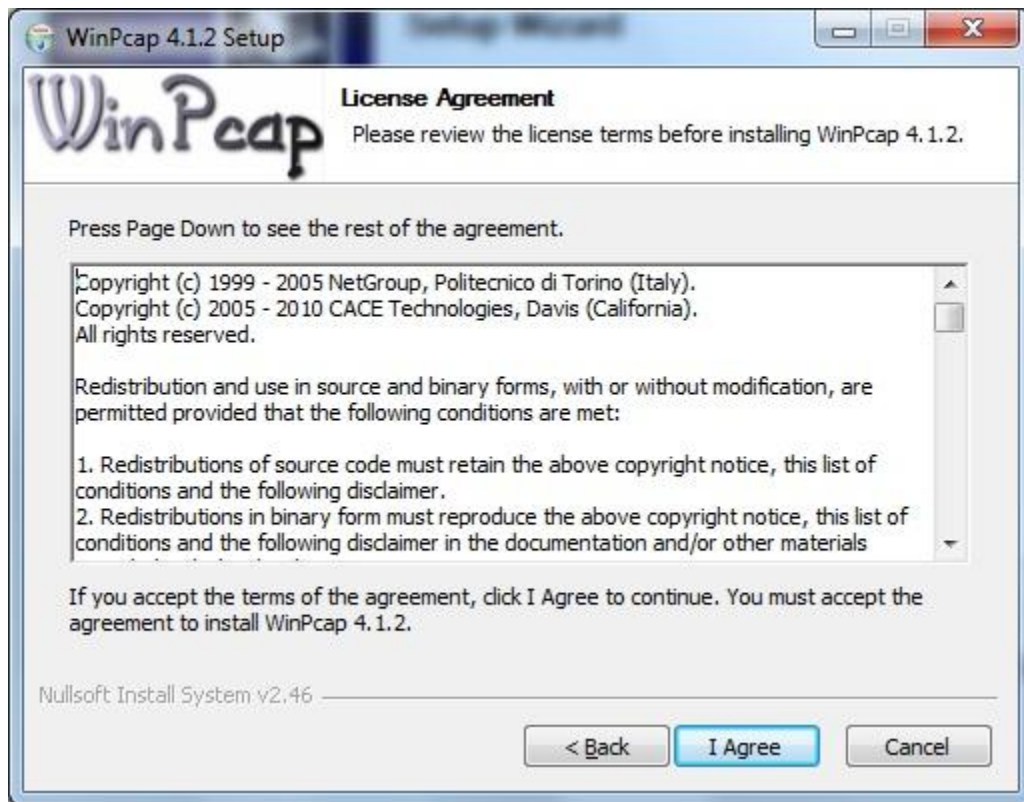
1. Insert software CD into CD-ROM drive and open it. Click on “**WinPcap_4_1_2.exe**”. And click on “**Next**” to continue.



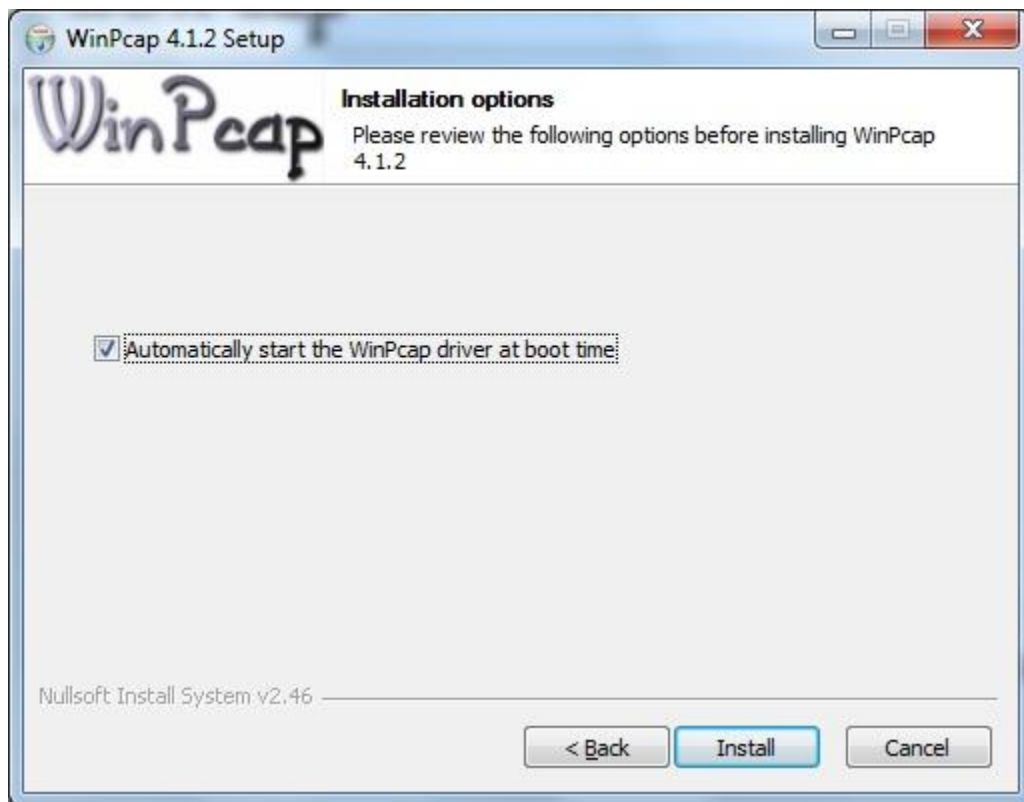
2. Click on “**Next**” to continue.



3. Click on "I agree" to continue



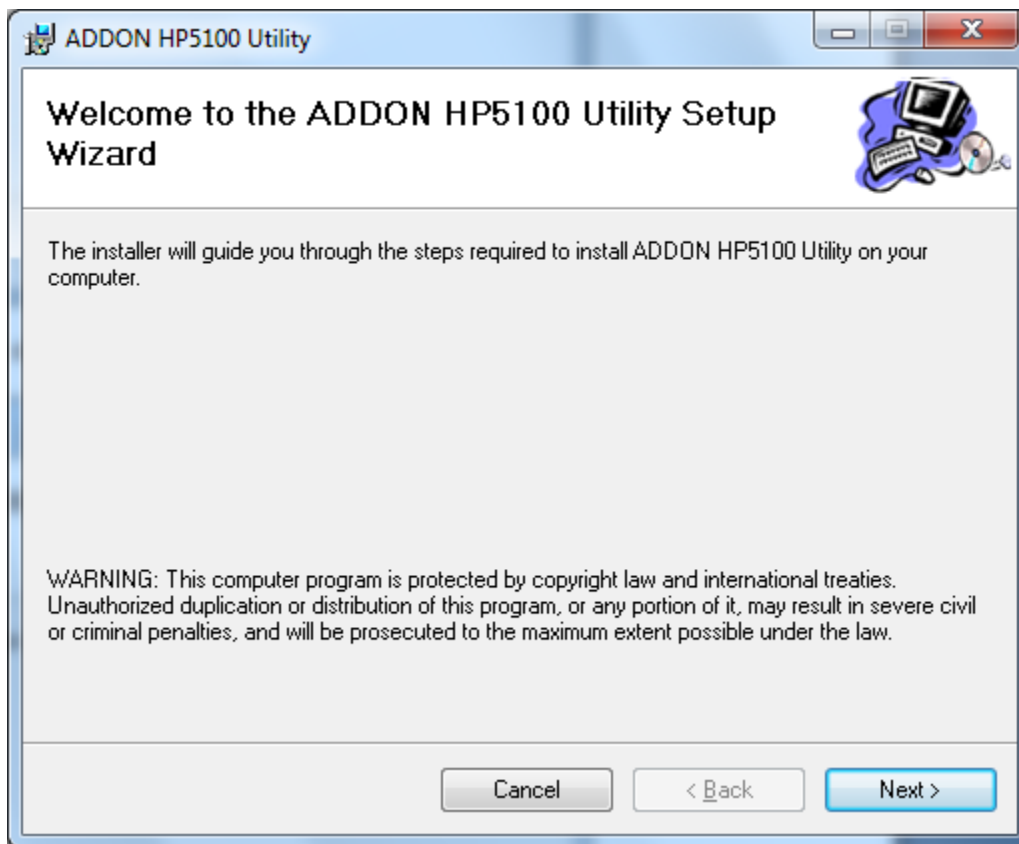
4. Click on "Install" to begin the installation.



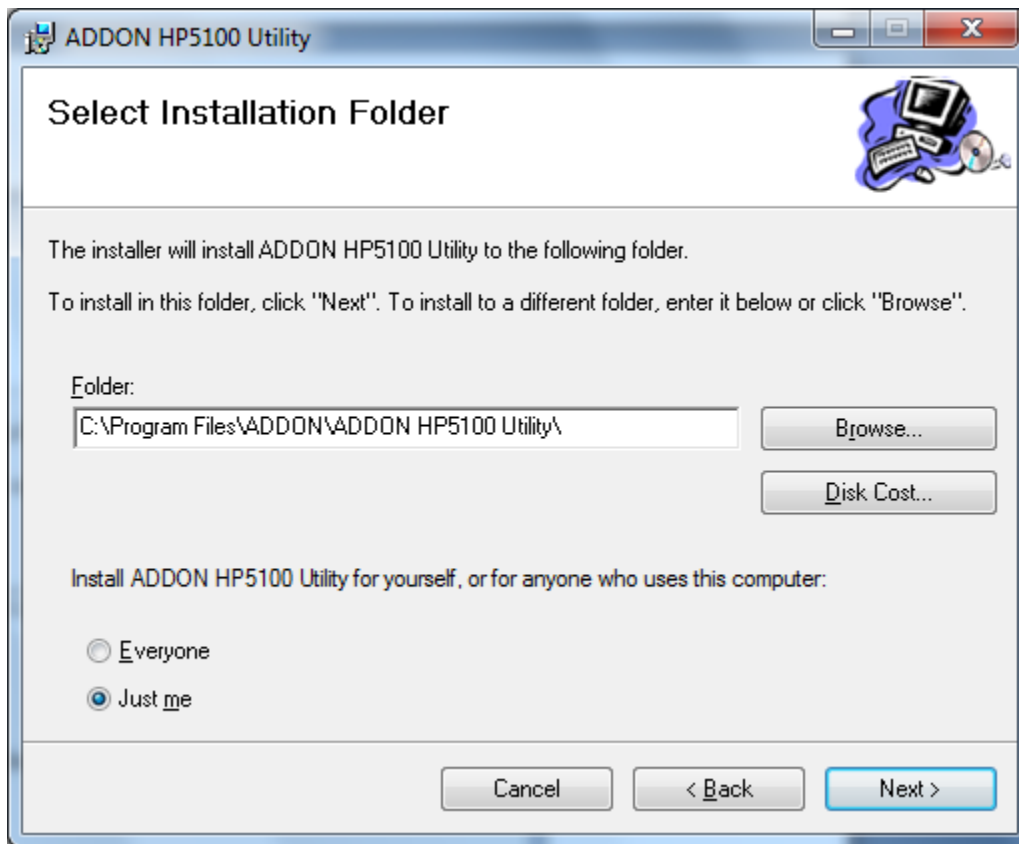
5. Click on “**Finish**” to finish WinPcap installation.



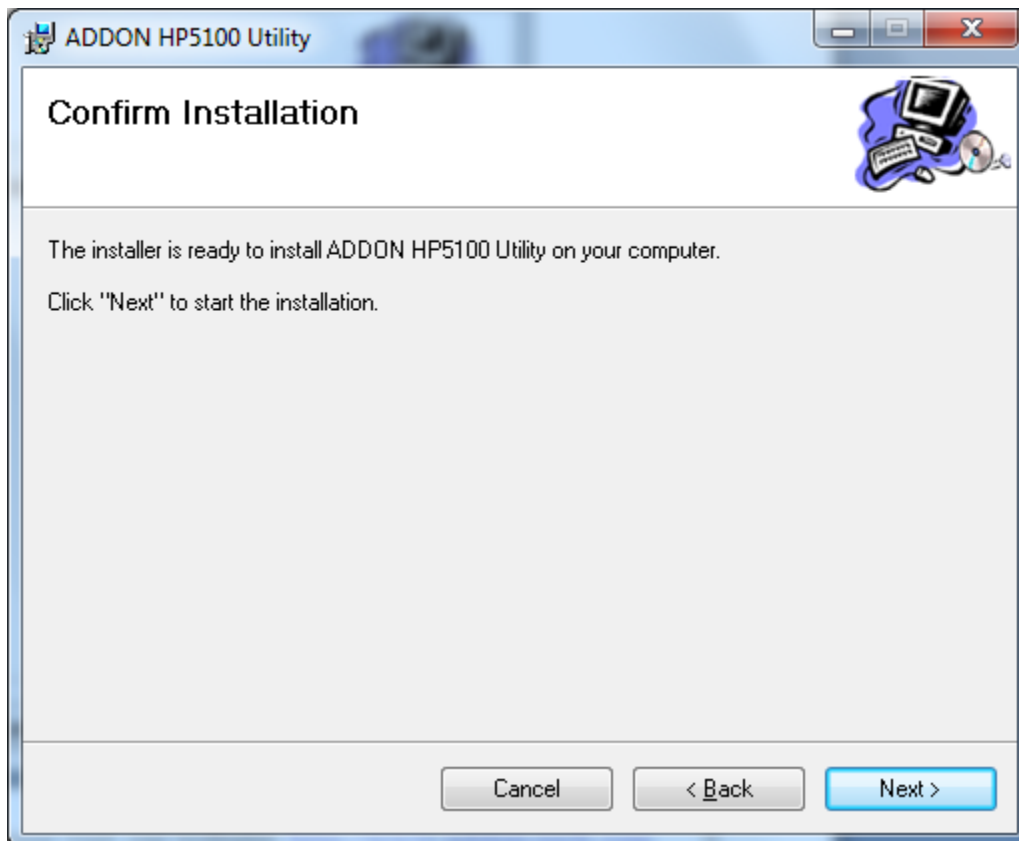
6. Go to CD-ROM drive, click on “**Setup.exe**” to start the Utility installation. And then click on “**Next**” to continue.

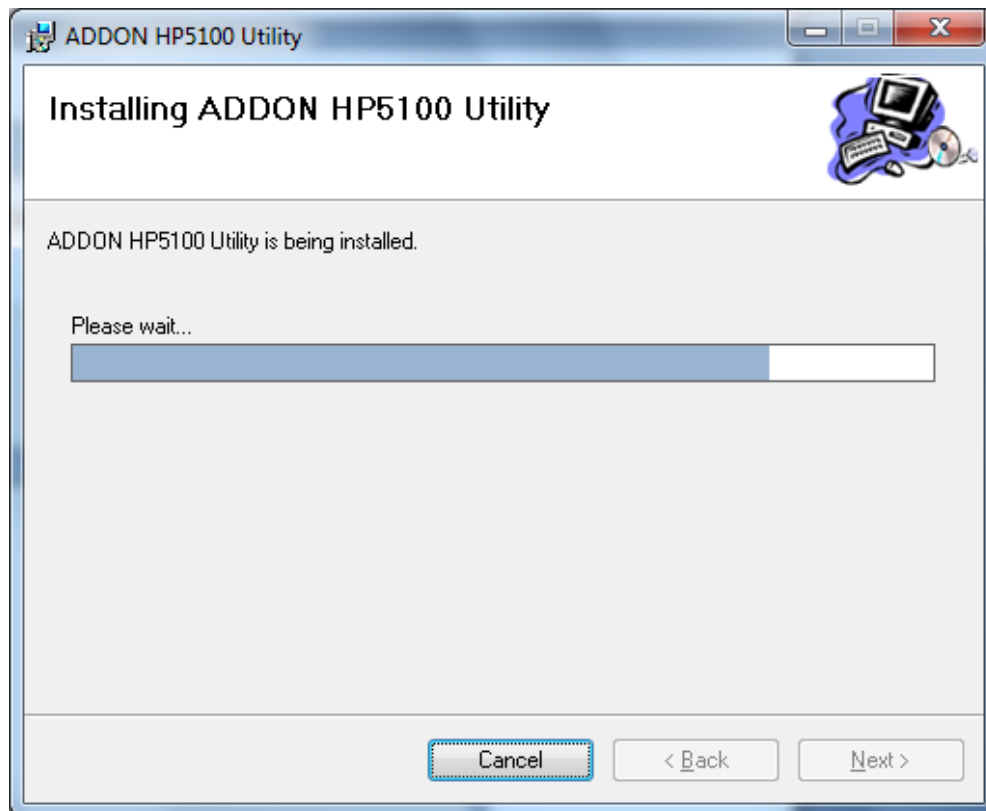


7. Click on “**Next**” to continue.

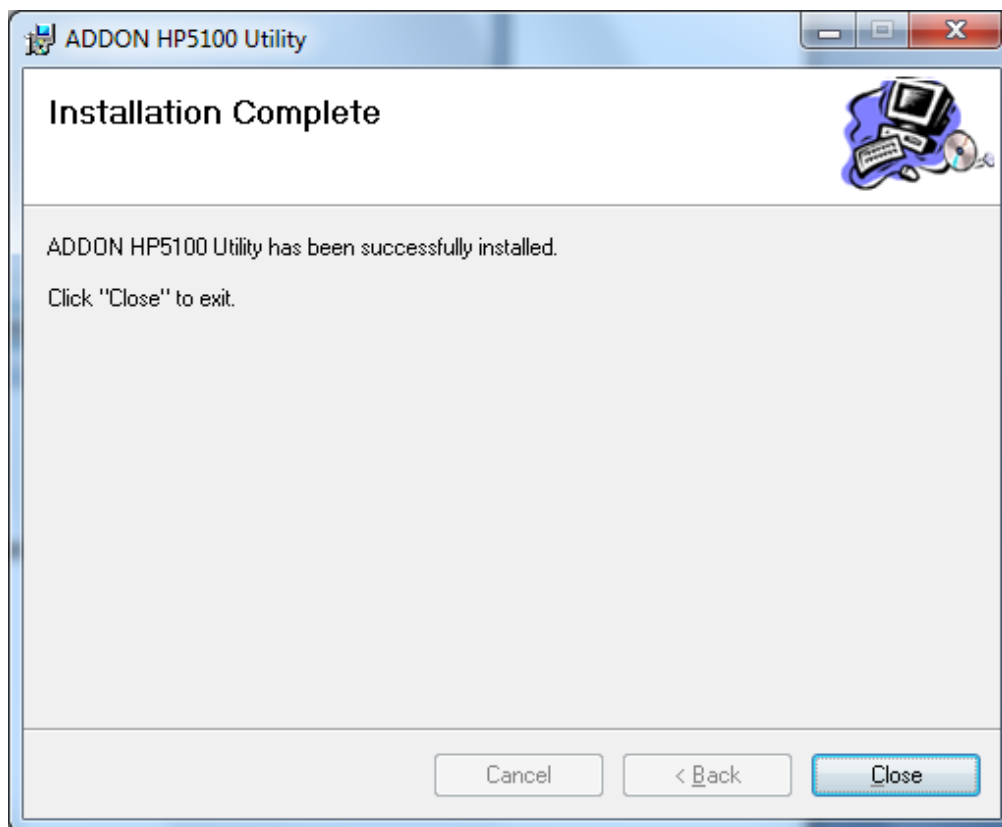


8. Click on “**Next**” to continue.





9. Click on "Close" to finish Utility installation.



For any further information or advanced settings on ADDON HP5100 Powerline AV Adapter, please refer to user's manual in the CD.

For any further information on ADDON product, please visit our website: <http://www.addon-tech.com>