



NWU285v2

802.11n
Wireless USB Adapter



* This quick installation is meant to help you to install the product quickly and easily. For further information, please refer to the user's manual.

ADD-NWU285v2 Quick Installation Guide

Package Contents

- One Wireless USB Adapter
- One CD-ROM includes driver, utility and user's manual
- One Quick Installation Guide



1. Software Installation for Windows 7

Note: For different windows users, the installation procedures are similar to each other.

Step 1: Insert the Wireless USB adapter into the USB slot of your computer. The system will automatically find the device and search for its driver.

For Windows Vista, Please click **Cancel**, if you see the following box.



For Windows XP, Please click **Cancel**, if you see the following box.



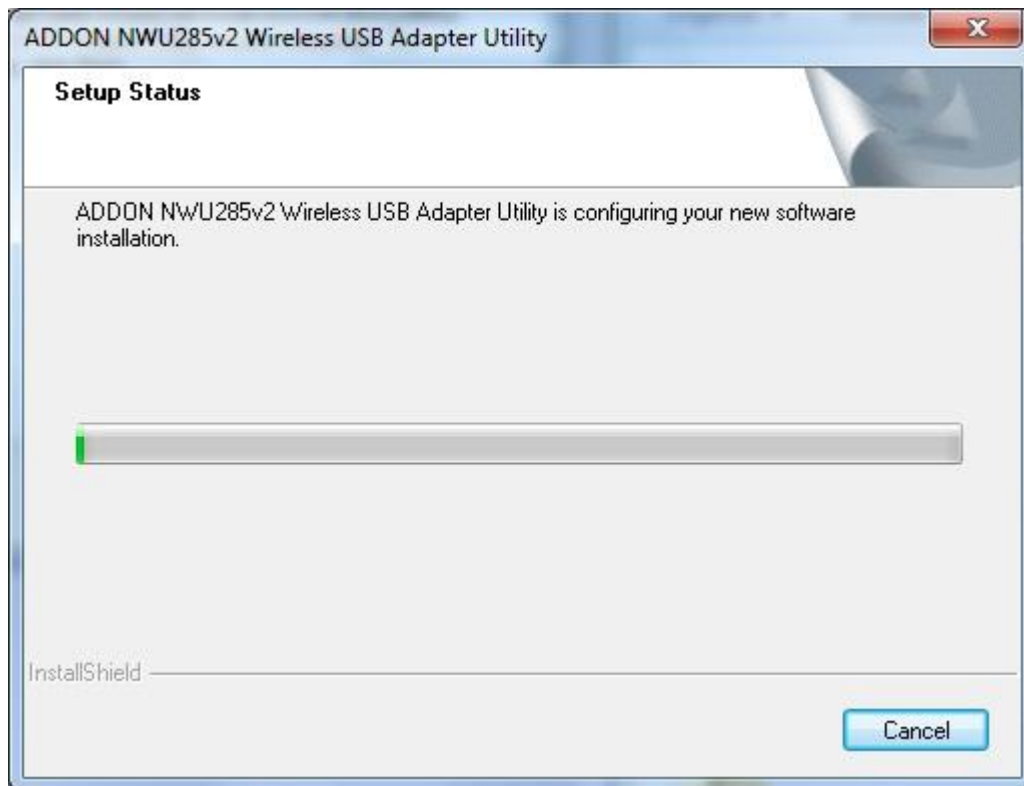
Step 2: Insert Wireless USB Adapter Installation CD into CD-ROM drive, it should run automatically as shown below, and then click on Install Driver to start the installation. If it doesn't run automatically, please open CD-ROM and click folder Driver->Windows->Setup.exe to start the installation.



Step 3: Click on **Next>** to continue.



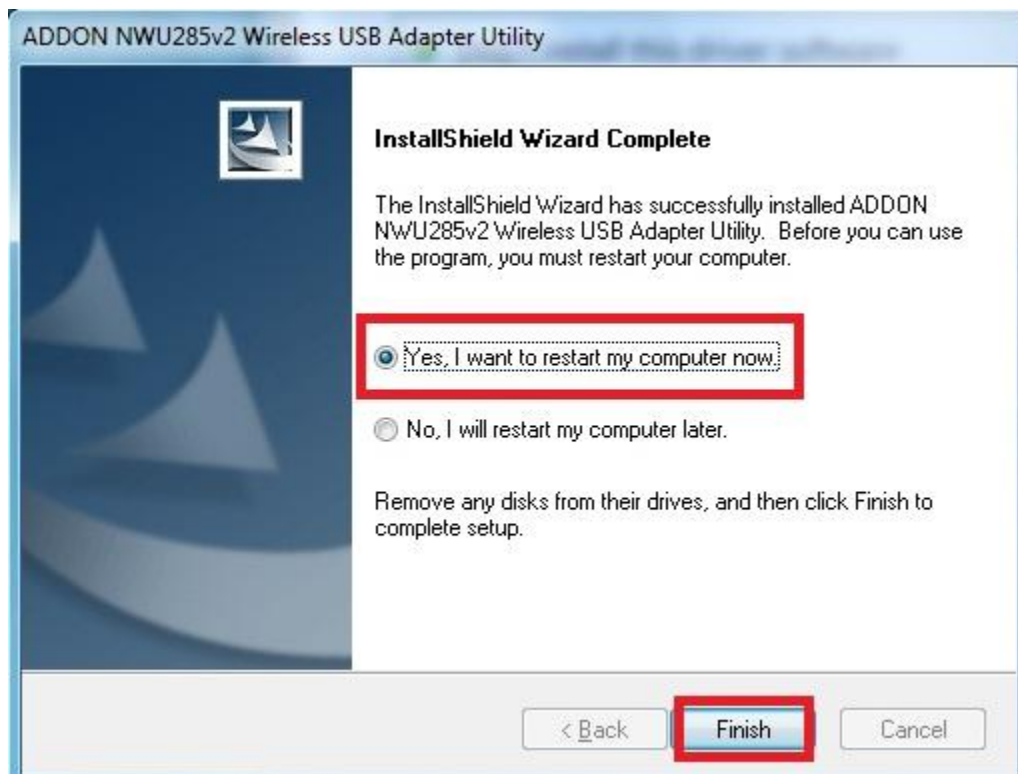
Step 4: Please wait for a while for installing process.



Step 5: Click **Install this driver software anyway** if you see the following box appeared.

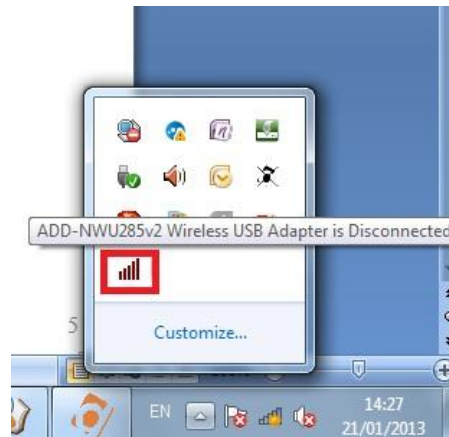


Step 6: Select “Yes, I want to restart my computer now” and click **Finish>** to finish installation

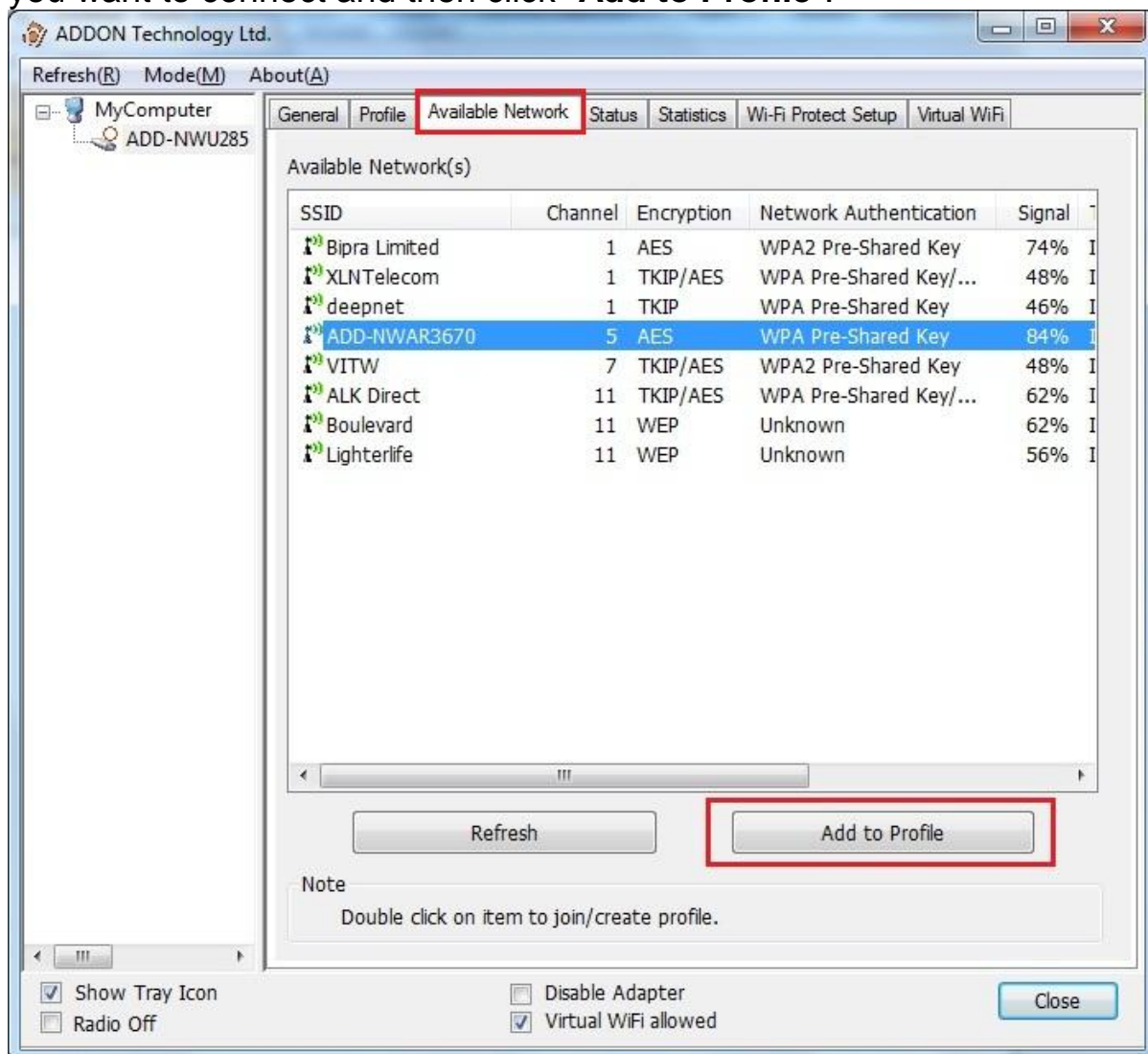


2. Configuring Wireless Network

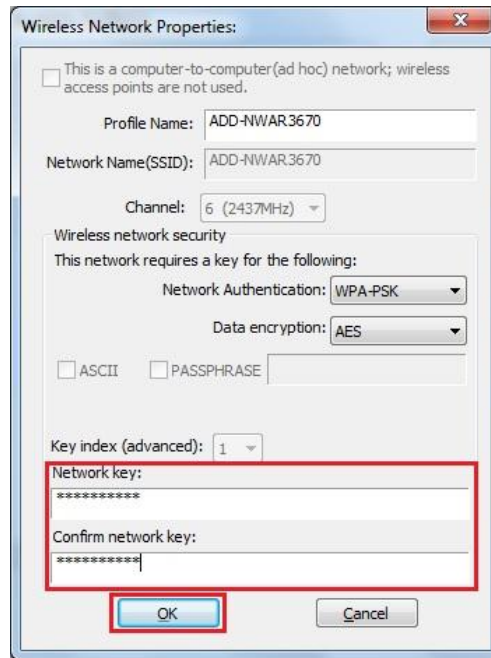
Step 1: Double click on Wireless Utility in the system tray. If the icon is not in the system tray, then you can find it by clicking on Start->All Programs-> ADD- NWU285 USB Wireless LAN Utility -> ADD- NWU285 USB Wireless LAN Utility.



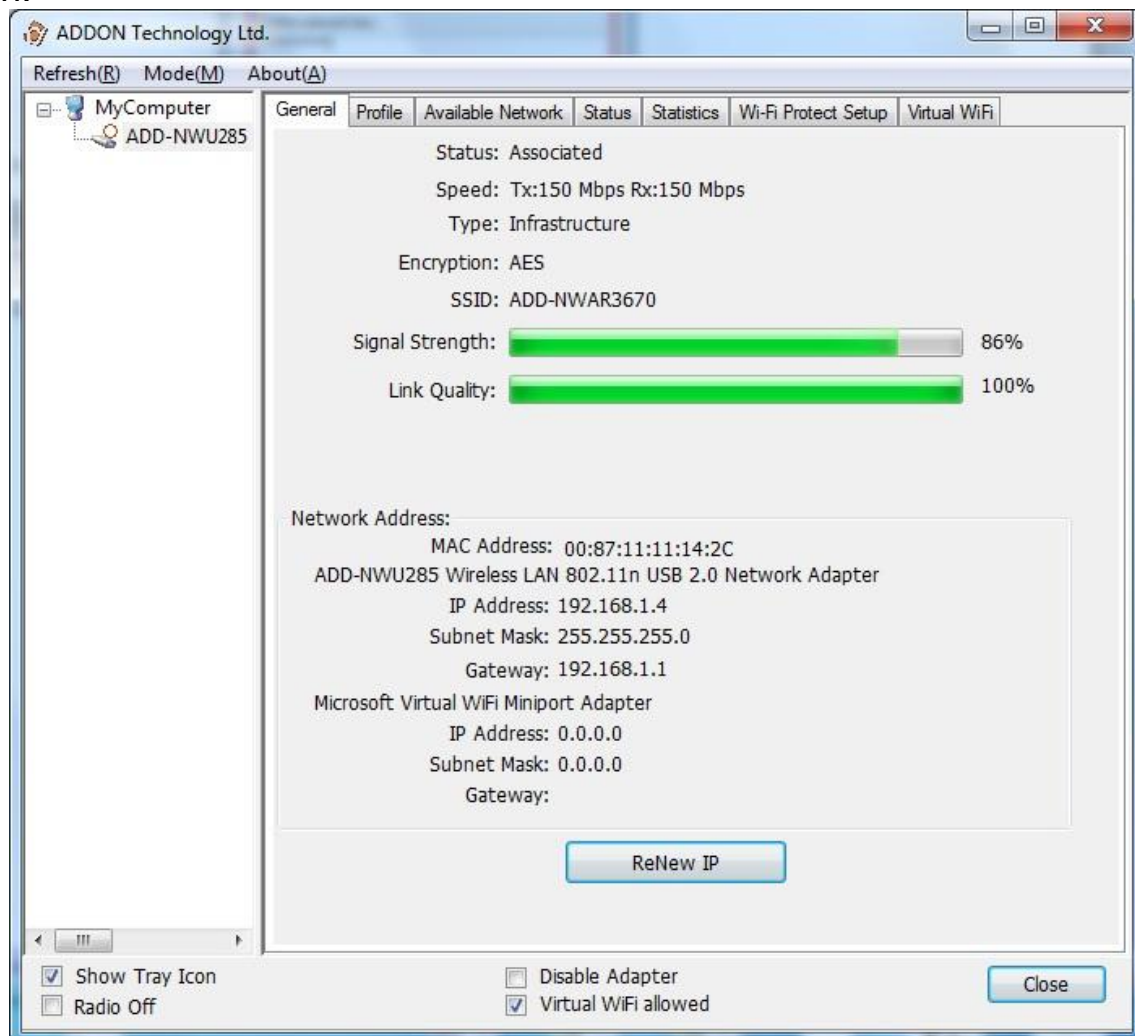
Step 2: You will see following screen. Click on the tab “**Available Network**”, highlight the network you want to connect and then click “**Add to Profile**”.



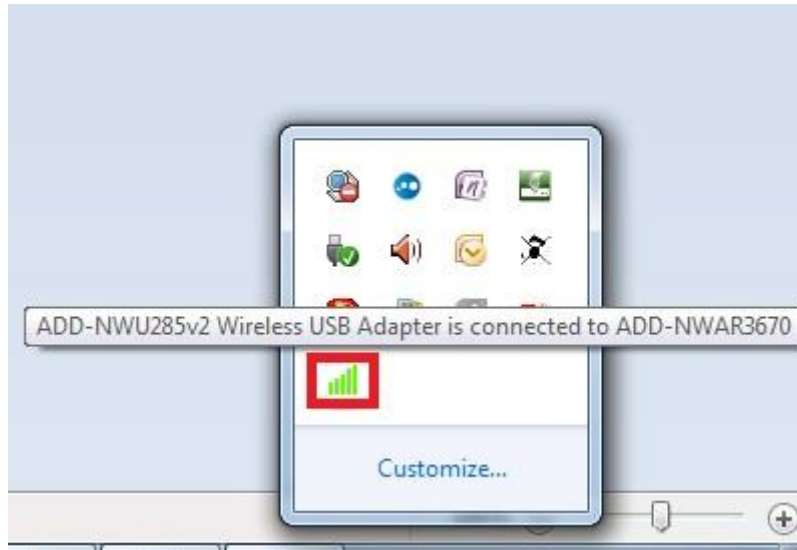
Step 3: You will see the pop up box and then enter the network key if it is necessary and click “OK”.



Step 4: It will jump to the tab “General” automatically and give you all the connection information.



Step 5: To check the connection, point your mouse to the utility icon in the system tray and it will show “connected to your network”



For any further information, please refer to user’s manual in the CD.